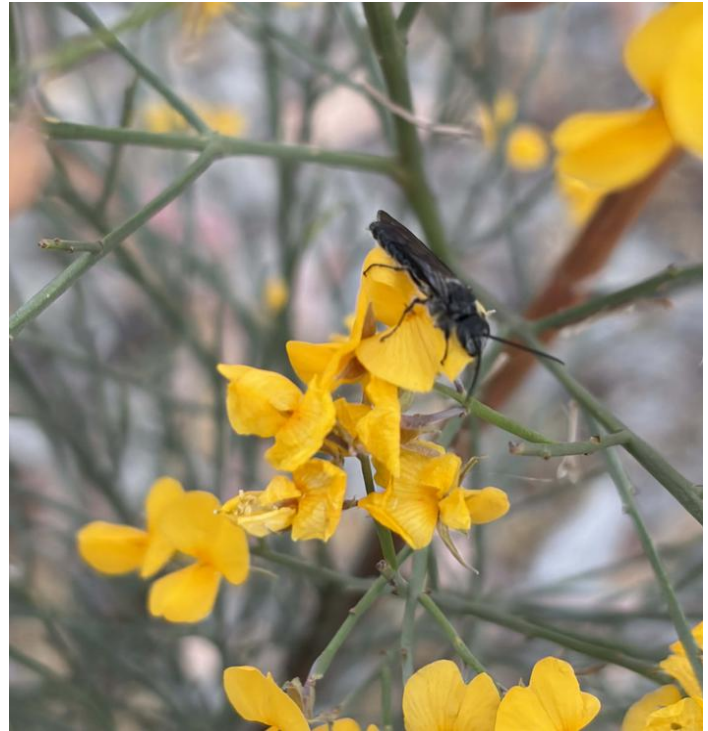


**STEP Photo Gallery**  
**September-December 2025**

*Yellow everywhere*



**Acacia doratoxylon – Currawang Shrub 3-8m**  
**In flower in October in the Wattle walk**



(BH)

**Jacksonia scoparia - Native dogwood. Tree to 12m.**  
**In flower in the Casuarina Nook in November**



**Craspedia variabilis - Billy buttons 50cm tall**  
**In flower in wetland in October**



**Goodenia ovata – Hop goodenia. Prostrate shrub to 2m**  
**In flower in Oct-Nov in the Central garden**

*But many other colours too*



**Olearia phlogopappa (white var.) – Alpine daisy bush**

**Olearia phlogopappa (pink var.)– Dusty daisy bush**

**Both are shrubs to 3m. In flower in October in the Central garden**



(ED)

**Pelargonium australe – Australian storkbill.**  
**Herbaceous plant to 50cm in flower in November**  
**In the central garden**



Winged everlasting

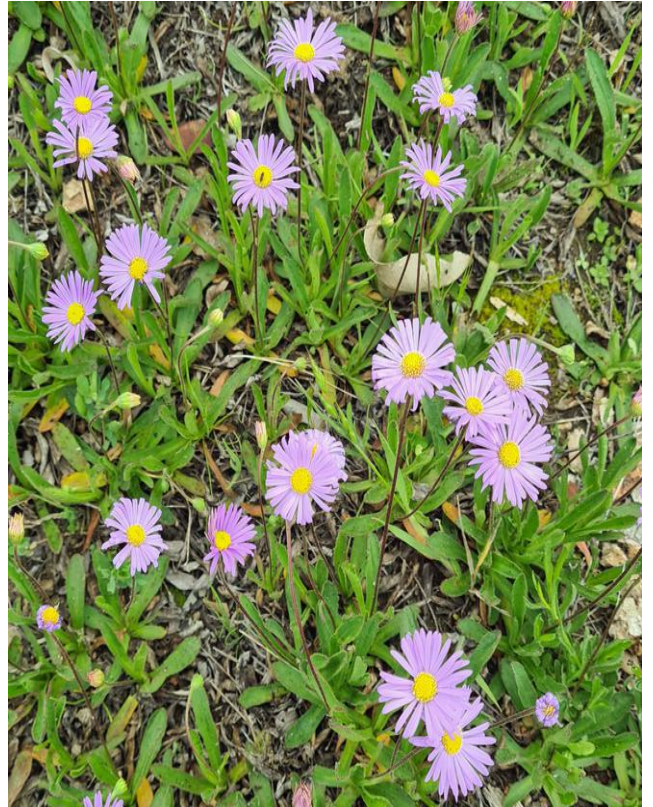
(ED)

**Ammobium alatum – Winged everlasting**  
**Herbaceous plant to 100cm in flower in Nov.**  
**In the central garden**

*Two ground covers in the wetland*



**Calotis anthemoides – Cut leaf daisy**  
20cm high. In flower in October.



**Brachyscombe spathulata - Spoon leaved daisy**  
60cm high. In flower in October

*Two small flowers you may have missed*



**Neopaxia australasica – White purslane** 3cm high  
Briefly in flower in early October in the Wetland



**Muehlenbeckia tuggeranong – Tuggeranong lignum**  
Endangered shrub up to 1m high. Flowers 4-5mm  
in flower in October in the Wetland

(CI)

*And a few more to show how much diversity can be seen at STEP*



(CI)

**Leptospermum continentale – Prickly tea-tree**  
Shrub to 3m, flowers 8-12 mm

Both in flower in the Central garden in November



**Hakea sericea – Bushy needlewood**  
Shrub to 4m. In flower Oct-Nov

Both in flower in the Central garden in November



(RW)

**Pultenea scabra – Rough bush pea**  
Shrub to 3m in flower in October  
In the Parade of Peas



(CI)

**Not a flower but a fungus – An Anemone stinkhorn**  
*Aseroe rubra*. Appeared in the Central garden in  
November. It attracts flies to the central orifice

*Other things observed at STEP*



(ED)

**White winged cough – the white can be seen on the underside of the wing as it flies.**



(ED)

**Eastern rosella**



**Uraba lugens – Gum leaf skeletonizer**



(RW)

**Teia anartoides - Painted apple moth caterpillar  
A tussock moth, pest of pine forests.**



**Calomela parilis – Acacia leaf beetle**

(DH)



**Scutiphora pedicellata - Metallic jewel bug**

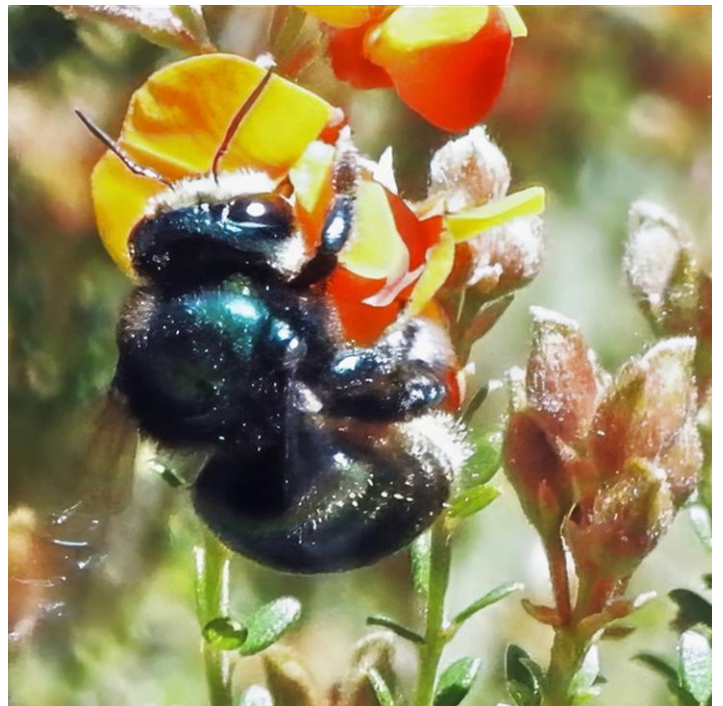
(JS)

**Both native to Eastern Australia**



**Vanessa itea – Yellow admiral butterfly  
visiting the Grevillea wilkinsonii**

(CC)



**Xylocopa genus – Carpenter bee  
visiting a pea**

(JB)

## *Spring at STEP*



Thank you to John Bundock (JB), Chris Chapman (CC), Elspeth O'Neil Driscoll (ED) Bill Handke (BH), Deb Howard (DH), Chris Ikin (CI), Judy Smith (JS) and Ray Walker (RW) for their photos.

Edited by Jennie Widdowson

The postal address for STEP is PO Box 440, Jamison Centre, ACT 2614. Email [secretary@step.asn.au](mailto:secretary@step.asn.au)

Web <https://www.step.asn.au>