



FRIENDS of the National Arboretum Canberra

Newsletter 16 / January 2012

Dear Friends

Happy New Year and welcome to our first newsletter for 2012. It is stacked full of photos and accounts of the many Friends' activities and Arboretum events that have taken place over the past three months, as well as detailing future opportunities for you and your family.

This will be the Friends' most exciting year yet as we lead up to the grand opening of the Arboretum in 2013. There will be much development at the Arboretum and much to prepare for the launch next year.

Did you get a Friends' 2012 Calendar? It very handily gives you the date of every Open Day, Working Bee and General Meeting for 2012 and the photos are fantastic. Calendars will be on sale at the Open Day on 12 February and the General Meeting on 14 February so you need not miss out. Key dates will also be available from our website at www.arboretumcanberra.org.au which is ever-expanding and of course new items will be sent to you via email and in newsletters.

I've taken a little space in this issue to acknowledge some of our members who are volunteers. We've had such willing helpers in so many ways for the 'Voices in the Forest' concert and every Open Day. Over the year I plan to acknowledge all volunteers, so the next list will include the National Bonsai and Penjing Collection of Australia volunteers, then groups involved in tree measuring, frog watching, bird watching, bus guides, and the website—the list goes on. You are all amazing with your enthusiasm and there will be so much more to get involved in this year.

The seats program will get a real go ahead in 2012, as will the Rocky Knolls program—it would be fair to say that we have been trialling various aspects of these activities and many thanks to all participants for their feedback so far. We will also be working on another aspect of fundraising—the bequests program.

Building towards 2013, we will commence guide training later this year to ensure that our guides can provide visitors with the best possible experiences—from walking tours and bus tours to explaining the displays in the new Visitors Centre.

I can't resist asking if you've seen the scaffolding which indicates how high the Visitors Centre's roof will be? Worth a visit on an Open Day just to see this!

In the meantime our 'Festival of the Forests' sub-committee is hard at work, co-ordinating everything with the Arboretum team and all the enthusiastic exhibitors ready for the Festival on 1 April. Shortly we will be calling for volunteers to help on this important day in our annual calendar.

Remember we are all ambassadors for this wonderful project and whether you volunteer or not, your passion and enthusiasm will build a fantastic response in our local community—and with all visitors.

Let's see you at the Arboretum in 2012!

Jocelyn Plovits
Chair

IN THIS ISSUE...

- More ceremonial tree plantings** page 2
- Voices in the Forest** page 6
- STEP hosts open day for Friends** page 9
- 2011 bird survey** page 10
- Bonsai attracted many at Floriade 2011** page 11
- Our visit to 'Nalyappa'** page 12
- Grevillea robusta in focus** page 13
- Friends out in force!** page 14
- Forest talk** page 15



More ceremonial tree plantings!

On Friday, 7 October 2011 **Mr Wolf Blass AM**, (award-winning wine-maker of the Barossa Valley) joined Mr Andrew Barr MLA, Deputy Chief Minister of the ACT, to plant an *Araucaria cunninghamii* (hoop pine) in the Arboretum's Central Valley.

On Saturday, 22 October 2011 **Mr Gen Nakagawa**, Mayor of Nara City, Japan, joined Ms Katy Gallagher MLA, Chief Minister of the ACT, to plant a *Prunus x yedoensis* (Yoshino cherry) in Lot 5. Two Giralang Primary School students attended the ceremony to greet the Mayor of Nara in Japanese. Learning the Japanese language is part of their school curriculum.

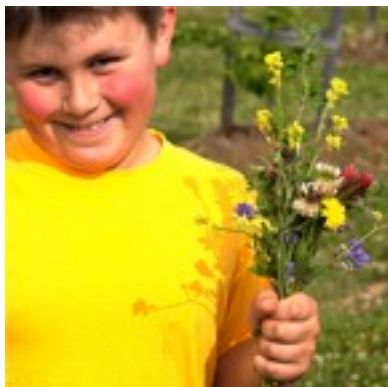
The Mayor of Nara (left) with the Chief Minister of the ACT (right) holding spades after planting the tree.



(Right) Callam and Emily Thomas spoke in Japanese to greet the Mayor of Nara.



While waiting for the dignitaries to arrive, Callam picked a colourful bunch of clovers and other flowers to present to the Chief Minister who accepted them graciously.



On Monday, 7 November **Mr Glenn McGrath** (Australian cricketing legend) and four breast cancer care nurses joined Ms Gai Brodthmann MP, Member for Canberra, and Ms Joy Burch MLA to plant two *Araucaria bidwillii* (bunya pines) in Lot 60. Mr Matt Kilby of Plant Pink presented Glenn with a cheque for \$7500 for the McGrath Foundation which is raising funds to increase the number of breast cancer care nurses.

Glenn McGrath with Gai Brodthmann MP (at back), Joy Burch MLA (centre front), four breast cancer care nurses and our secretary, Colette Mackay (at right).



On Tuesday, 22 November Their Royal Highnesses **Crown Prince Frederik** and **Crown Princess Mary** of Denmark were greeted by Ms Katy Gallagher MLA, Chief Minister of the ACT, and Mr Andrew Barr MLA, Deputy Chief Minister of the ACT, when they planted an *Acer campestre* (field maple) in the Central Valley. Mr John Mackay introduced Helena Corkill, a Giralang Primary School student, who recited the verse of Dorothea McKellar's poem 'My Country' which includes the words 'the wide brown land for me'—the subject of our unique sculpture which the royal couple had just visited.

Members of the public had entered a draw for the right to attend the ceremony and the rain didn't deter them. There were several hundred umbrellas being held up—a veritable forest of umbrellas which made a very colourful sight! The royal couple took time to greet many members of the public and accept posies along the way. A choir from Giralang Primary School

The royal party headed towards the Central Valley after viewing the 'wide brown land' sculpture.



A tiny sample of the umbrella forest.

sang as planned, but huddled under a tarpaulin supported by umbrella spikes! See photo, bottom left.

John Mackay applauding Helena's recital.





Klugman AM, President of Civil Liberties Australia. This tree will be known as 'The National Liberty Tree'. This tree-planting was an initiative of Civil Liberties Australia to honour Jon's contribution to human rights in Australia and acknowledge his vision in establishing this Arboretum. Charlotte was involved because she was born on 1 July 2004, the day the ACT Human Rights Act (which Jon championed) came into effect.

Jon Stanhope addressing the assembled guests, prior to planting the tree, and below, with Dr Kristine Klugman and Charlotte Withers, after the planting.



After planting the tree, Crown Princess Mary and Crown Prince Frederick cheerfully watered the tree in, despite the rain.

On Saturday, 10 December 2011 (Human Rights Day) **Mr Jon Stanhope**, former Chief Minister of the ACT, joined Miss Charlotte Withers (aged seven) to plant a *Brachychiton populneus* (kurrajong) in the Central Valley in the presence of Ms Katy Gallagher MLA, Chief Minister of the ACT. Jon was accompanied by Dr Kristine



NOTE

We intend publishing an ongoing record of ceremonial plantings and will be adding any missing details of previous plantings as they become available. (Ed.)

Photos by Linda Muldoon

Some of our wonderful 2011 volunteers

BY JOCELYN PLOVITS

We have so many volunteers doing so many things and it is important to acknowledge you all. In subsequent newsletters we will focus on other aspects of volunteering. If you have not yet been a volunteer, why not experiment for a couple of hours and join in the camaraderie, the feeling of tasks well done and support the development of our wonderful Arboretum.

If I have inadvertently left you off either of these lists, or spelt your name incorrectly, please let me know so that you can be properly acknowledged.

'VOICES IN THE FOREST'

In November 2011, the Friends supported the 'Voices in the Forest' concert. Fantastic musical performances, including choirs, opera, jazz, pop, and songs from musicals, were set on a temporary stage where it's planned that the amphitheatre will stand in due course. Around 4000 people attended, the weather was kind and a great time was had by all.

Friends' volunteers received free entry, a T-shirt, and meal/drinks tickets. They helped with chair set-out and numbering, ushering, providing information, selling programs, books and calendars, and clearing the site after the event. Thanks to Sue Brown, Jenny Cantlon, Kath Dyason, Viki Fox, Jill and Barry Freeman, Jeanette Hahn, Bronwyn Halbisich, Mary Hodgkinson, Glennys Lynne, Sarah and Roger Hnatiuk, Bev Kaiser, Ermalindo Maculan (Mac), Carmel Maher, Marie Mannion, Linda Muldoon, Chris and Jim Payne, Jocelyn Plovits, Marelle and Rob Rawson, Carolyn Thomas, Shirley Wilton.

I know many members attended as concert-goers—this too is a fruitful way to support the Arboretum and its development.

We particularly thank Dami Vigone, the Arboretum Marketing Manager and concert organiser, Bob Winnel and the Village Building Company, and other sponsors without whom this event would not have been possible. We all look forward to the next concert and will let you know as soon as a date is set, so that you can book tickets or become a volunteer.

OPEN DAYS

The second Sunday of each month is an Open Day at the Arboretum, hosted by the Friends. Volunteers are bucketeers at the gate collecting donations and providing information, or working as explainers at the display and also selling books and calendars, or working as guides on the sponsored bus tours.

The fantastic people who are volunteers for this regular activity make all the difference and in 2011 have helped raise many thousands of dollars to support the development of the Arboretum—and ensured that several thousand visitors had a rewarding time. It is a sure sign of success when visitors come again, bringing friends



Bucketteers working at the Arboretum gate.

and relatives with them. In addition, many new members flow from handing out membership pamphlets to visitors

Thanks to Jenny Aitchinson, Cynthia Blount, Sue Brown, Max and Margie Bourke, Gail Burns, Michael Burton, Jenny Cantlon, Darelle Carmody, Del Da Costa, Di Davies, Kath Dyason, Viki Fox, Jill and Barry Freeman, Mo Freeman, Linda Beveridge, Peter De Dekker, Tony Daukus, Jacquie Elliot, Julie Evans, Jeanette Hahn, Bronwyn Halbisich, Mary Hodgkinson, Anna Howe, Tralie Kimlin, Naomi Landau, Anne Lomax, Glennys Lynne, Meredith Hinchcliffe, Roger Hnatiuk, Sylvia Huntly, Bev Kaiser, Trish Keller, Rachel Letts, Beth and Ross McConchie, Kate McCarthy, Colette Mackay, Ermalindo Muculan (Mac), Carmel Maher, Marie Mannion, Joanne Maples, Louise Muir, Linda Muldoon, Doug Nancarrow, Freya Parkes, Jocelyn Plovits, Julie Poole, Richard Pratt, Cheryl Pye, Sumaiya Quasin and Manar Ahmad, Marelle and Rob Rawson, Deborah Rickwood, David Shorthouse, Carolyn Thomas, Jennie Widdowson, Doreen Wilson, Shirley Wilton, Gail Winnett, Martin and Sue Wright, Dianne Wright.

In 2012 these Open Days will continue, though we'll need to be flexible about where the display is located while works are being completed on the Event Terrace, ready for the grand opening in 2013.

Trish Keller (right), our Deputy Chair, working as an explainer.



Voices in the Forest

A PICTORIAL REPORT BY
LINDA MULDOON

WET, WET, WET!

A group of Friends' volunteers assembled at the temporary Visitors Centre to set out seats on Thursday, 10 November, but this was not to be.

The seats were housed in a container at the back of the Events Terrace but in the boggy conditions there was no suitable transport to get them to where they needed to go. We watched some brave souls erecting the framework for the stage 'tent' in very bleak conditions, and then went home.



This was the scene near the entry to the dining pavilion. The wet conditions obviously made life difficult for everyone.

Some of our group returned to do the seat set-out and numbering on Friday, 11 November, and worked all day to get the job done!

The other item on the agenda that couldn't go ahead on the Thursday was the ceremonial tree-planting of a linden tree (in the Arboretum's Lot 44) by the concert's Swedish star performer, Ms Anne Sofie von Otter. The dirt road to this forest was awash and at short notice the Swedish Ambassador, Mr Sven Olof Petersson, offered the Embassy of Sweden in Yarralumla as an alternative venue. The Ambassador and Anne Sofie

von Otter planted a *Tilia cordata* (linden tree) in the centre of a traffic island in the park-like embassy grounds.



Following the tree-planting we retired to the embassy residence for champagne and afternoon tea—the Ambassador stands at right.

THE SHOW MUST GO ON!

The Friends' volunteers attended a briefing on the Friday evening and by this time things were looking very different. The seats were all in place, rehearsals were underway and the lanyards were ready and waiting with blue ribbons for the volunteers and gold for those with 'A' seats— and best of all the sun was shining.

Eventually around 4000 people were seated and the concert got underway with John Mackay, Chairman of the Arboretum Board, introducing Alex Sloan, the concert MC.

Act 1 began with five songs from the youth choir which were followed by impressive performances by Robyn Archer, Louise Page, Henry Choo, and Christina Wilson, with Peter J Casey as Pianist and Music Director.



Lanyards awaiting collection.



John Mackay, introducing the MC, Alex Sloan.



THE BIG DAY ARRIVED!

Volunteers had to be on duty from 2.00pm and the audience began arriving very slowly but as time drew closer to 4.00pm and the start of the performance, cars were crawling in bumper to bumper.



Act 2 began with the arrival of our close neighbour, the Governor-General of Australia, Ms Quentin Bryce AC, who addressed the audience. And then came Anne Sofie von Otter and the audience was just spellbound. Whether she was singing opera, Abba or hot jazz we understood why she is a star. Her versatility is just amazing and if you'd only heard her singing jazz you'd have no clue that she is primarily an opera singer.

There were further performances with Louise Page, Henry Choo and Christina Wilson, followed by a grand finale with the youth choir.

(Top) Christina Wilson (left), mezzo soprano, in a duet with Elaine Page, soprano.

(Centre) Anne Sofie von Otter, mezzo soprano, singing a dramatic operatic role.

(Bottom) Anne Sofie von Otter singing jazz.

But the Friends' work was not over yet. Some members stayed behind to remove seat numbers, while others returned on Sunday morning to collapse thousands of chairs.



(Top) Henry Choo, tenor.

(Centre) the finale, an Abba song, 'Thank you for the music!'

(Bottom) Friends survey their work with all the chairs collapsed!



STEP hosts open day for the Friends

BY DAVID SHORTHOUSE

With 16 eucalypt species now well-established in our forest and the first understorey plantings underway, STEP invited the Friends of the National Arboretum Canberra to a guided tour of Lot 100.

On Sunday, 23 November 2011 about 30 Friends and STEP hosts met up on a lovely sunny afternoon. After a short explanation of the master plan for Lot 100, Cathy Robertson, Andy Russell and Lainie and David Shorthouse led the visitors through the STEP site, showing them the new plantings, describing our successes and failures, and outlining our hopes and aspirations for the future.

Our visitors were very pleased to see our site and expressed surprise at how much we have achieved.

Lot 100 is a bit off the main route for Arboretum visitors and the Friends can play an important role in directing them to our regional botanic garden for the Southern Tablelands.

STEP will be hosting visits on the second Sunday of each month from 10.00 am until noon. The Arboretum will be open to the public with car access at that time.

If you have links to other groups with skills in propagating the native plants needed for STEP's central garden, please contact us and let us know how you may be able to help, phone 6257 1951 or email info@step.asn.au.



(Top) Friends at the STEP site, photo by Cathy Robertson.

(Above) David explaining the need to protect plantings of *Poa sieberi* (a tussock grass) from hares and kangaroos and (below) pink arbor guards protecting a group of local *Leptospermums* (tea trees), photos by Linda Muldoon.



Westbourne Woods Arboretum Walks

Sunday, 12 February
Trees for our needs
Guide: Ross Lapworth
Phone 6231 8692

Sunday, 11 March
Remarkable trees in the woods
Guide: John Turnbull
Phone 6281 5991

Sunday, 8 April
From the nursery to the bush
Guide: Frank Grossbechler
Phone: 6295 3937

Sunday, 13 May
Trees large and small
Guide: Roger Hnatiuk
Phone: 6251 2228

Free two-hour guided walks through the grounds of Royal Canberra Golf Course.

Meet at the entrance, off Bentham Street, Yarralumla at 9.30am. No dogs allowed.

For further information contact the guide of the month or the Friends of ACT Arboreta on 6288 7656 or 6281 1587.

Dress code applies if you accept the invitation of the Club to visit the Spike Bar after the walk.

2011 bird survey

BY CHRIS DAVEY COG President

A repeat of the bird survey conducted at the National Arboretum Canberra in October 2009 was conducted in overcast windy conditions on 25 September 2011. Four teams of Canberra Ornithologists Group (COG) members surveyed the same area in the same manner as two years previously. The area was again divided into four sections with each team responsible for one section. The number of individuals, species and lot number were recorded for all birds in a lot or flying over.

Each section covers a similar area. Section 1 covers the area from the cork oaks to the edge of the Central Valley and includes the Himalayan cedar forest (24 lots). Section 2 includes the Central Valley and the dam near the entrance and extends beyond the Event Terrace (24 lots). Section 3 extends to the south-west and includes Dairy Farmers Hill (21 lots). Section 4 covers the area to the south-west of section 3 (24 lots). Two years ago many of the lots were unplanted in Section 4, whereas now plantings extend beyond the 2009 boundary.

A total of 50 species has now been recorded from the two surveys. The 2011 survey recorded 40 species, compared with 39 species two years previously. When compared with 2009, the number of species recorded in each section (with 2009 numbers in brackets) was as follows: section 1—27 (24); section 2—19 (12); section 3—8 (17); section 4 15(16).

All lots that were surveyed are now planted and consist of a short grassy herb layer with scattered trees that have not yet grown sufficiently to develop a canopy layer. In 2009 many of the survey lots in section 4 were not developed and consisted of *Pinus radiata* regrowth or piles of wood, thistles and blackberry patches.

Not surprisingly this change has led to a 50% decline in the number of **Superb Fairy-wrens**. Of interest is the number of species that showed an increase in abundance. This includes the **Australian Pipit**, **Common Starling**, **Crested Pigeon**, **Skylark**, and **Yellow-rumped Thornbill**. New species included the **Southern Whiteface** and **White-fronted Chat**. All are species that benefit from the open grassland that now dominates the Arboretum and may well be affected by the development of a future canopy layer.

REMEMBER!

Membership renewals were due in December so if you haven't paid yet, your membership is overdue!

You can pay via our secure website or by mail—see back page.



(Above) conditions were cold and windy as COG members and Friends gathered at the gate at 7.30am.



ARBORETUM BIRD LIST

(compiled from 2009 and 2011 surveys)

Australasian Pipit
Australian Magpie
Australian Raven
Australian Wood Duck
Black-faced Cuckoo-shrike
Black-shouldered Kite
Brown Thornbill
Common Myna
Common Starling
Crested Pigeon
Crimson Rosella
Eastern Rosella
European Goldfinch
Flame Robin
Galah
Golden Whistler
Grey Fantail
Grey Shrike-thrush
Grey Teal
Horsefields Bronze-cuckoo
Little Raven
Magpie-lark
Masked Lapwing
Mistletoe bird
Nankeen Kestrel

Pacific Black Duck
Painted Button-quail
Pied Currawong
Red Wattlebird
Red-rumped Parrot
Rock Dove
Rufus Whistler
Silvereye
Skylark
Southern Whiteface
Striated Pardalote
Striated Thornbill
Sulphur-crested Cockatoo
Superb Fairy-wren
Superb Parrot
Weebill
Wedge-tailed eagle*
Welcome Swallow
White-browed Scrubwren
White-fronted Chat
White-naped Honeyeater
White-plumed Honeyeater
White-winged Chough
Willie Wagtail
Yellow-faced Honeyeater
Yellow-rumped Thornbill

*Not sighted on these surveys but we've published Adam's photo of one soaring over the Arboretum (Ed.)

Bonsai attracted many at Floriade 2011

BY LEIGHT A AFE *Assistant Curator, NBPCA*

Floriade 2011 was a very busy and successful month for the National Bonsai and Penjing Collection of Australia. Over the 30 days of Floriade the Collection had 67,583 visitors and this was a 10.7% increase over Floriade 2010. It seemed as if the weather, which Floriade staff described as 'unfavourable' for their attendance figures, made no impact on the number of people who visited the Collection.

This increase in attendance, in a year when Floriade numbers were slightly down on 2010, may have been a result of changes that Floriade management made to activities that had previously cluttered the entrance to the cottage. Having a more accessible and visible entrance may have attracted more people. It could also have been our continuing exposure throughout 2011, which attracted people to Floriade and the Collection.

During Floriade, there were certainly times when we felt heavily patronised. On a number of occasions we had people queuing outside for quite some distance, just to get in and see the bonsai!

*Chinese elm. Age of tree, 1984, trained since 1994.
On loan from artist Lin Xin Hong, Victoria.*

We had just replaced our exhibits that were on loan from Melbourne with some very exciting trees, including two penjing from a first-time 'loaner' to the Collection. This artist has enabled us to display a very different style of bonsai and penjing to those we've displayed in the past.

Both of these trees proved to be very popular with the visitors, but the landscape attracted extra attention for its miniature garden setting of a pagoda shaded by a fruit tree (see photo).

We had previously recognised that Floriade could be a lucrative period for donations, so this year we decided to make a large and conspicuous donation box. We settled on a very large perspex box that sat on a table at the entrance with great signage, indicating that donations would help with the construction of a frost-free area at our new Bonsai Pavilion which is under construction at the National Arboretum Canberra. This was a great success as we raised over three times as much in donations than in the same month in 2010.

It is important to recognise the extended effort of all our volunteers during this Floriade 2011 period. We had 38 volunteers who gave a total of 640 hours of their time to manning the display. They gave their time happily and enthusiastically for the benefit of the viewing public. Volunteers help us to keep the Collection looking pristine and they also welcome visitors, answer questions, and ensure the security and welfare of our exhibits. We expect to experience one more Floriade before moving to the new Bonsai Pavilion.



Our visit to 'Nalyappa'

BY LINDA MULDOON

On 19 November we visited another arboretum—'Nalyappa' in the Yoauk Valley, New South Wales, near the Murrumbidgee River and not very far from the ACT border (though coaches have to travel the long route via Cooma). Max Bourke, our resident 'Arboretum Guru', organised the trip to this privately-owned oasis, established by Maurie and Val Henderson over a 30-year period. Our group consisted mostly of Friends of the National Arboretum Canberra, but included Friends of ACT Arboreta and members of the Australian Garden Historical Society.

We set off from Russell at 8.30am travelling aboard a Murrays coach, and stopped at Adaminaby where we visited the impressive new Snowy Scheme Museum.

Then we travelled on to Yoauk Valley. When we arrived at 'Nalyappa', Max introduced Maurie and Val, who at 85 years are amazingly fit, upright and alert. Apart from looking after the arboretum, Maurie still does some engineering work. He gave a short talk about their arboretum endeavours and I'm sure we all concluded that hard work and being surrounded by trees and the sounds of birds must surely be good for you!

Max presented the Hendersons with a Norway spruce to add to their collection, and then it was time for the packed lunch which we ate in very pleasant surroundings. One group sat under shade trees that formed a wonderful canopy over an entertainment area adjoining the house, while another group sat around a table out on a shady area of lawn. Then we were all free to wander through the mostly exotic plantings of various conifers and many deciduous species, along with plentiful birds, white daisies and rampant Russell lupins. They were also free to wander!



Max Bourke (left) with Maurie and Val Henderson.



(Right) lupins create a colourful landscape on the edge of the property, looking towards the Murrumbidgee.



(Right) Maurie hasn't finished planting yet! Here he has some recent acquisitions in a temporary location.



(Far right) what a spot for lunch under superb spreading shade trees.



Grevillea robusta (silky oak)

BY LINDA MULDOON

The Friends pruned the lower branches from our silky oak forest as a Working Bee activity in July 2011, so here we take a look at how our trees should develop.

This is a fast-growing semi-deciduous tree which loses some of its leaves before flowering in late spring. Silky oak grows to a height of 30 m with a spread of about 15 m and this makes it the largest of the Grevilleas—hence the name '*robusta*'. The bark is greyish, rough and deeply grooved.

Although not classified as threatened, *Grevillea robusta* is relatively rare in its native habitat of south-east Queensland and north-east New South Wales.

Leaves are soft and fern-like, 15-30 cm long, mid-green in colour on the upper side, pale green and downy on the underside and they ripple in the breeze.

The flowers are very showy, combining yellow and deep orange, and they grow in 'toothbrush-like' spikes,

Canberra Avenue, Manaka, were planted by the Institute of Engineers more than 90 years ago. Our *Grevillea robusta* forest in the Arboretum's Lot 28A has been planted next to the pin oak forest (*Quercus palustris* 'freefall') in Lot 22A/B to remind us that there is a connection: the pin oak forest was sponsored by the Institute of Engineers.

And of course you can find *Grevillea robusta* at the Australian National Botanic Gardens and in many suburban gardens throughout Canberra.

Like most other Grevilleas they attract many nectar-feeding birds.

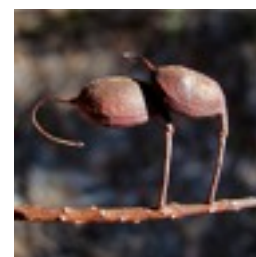


A mature street tree in Baudin Street, Forrest in January when the flowers were fading. See the lamppost to get an idea of the tree's size.



Immature fruits on the tree above and (far left) the flowers in late spring.

(Below) mature fruits.



8-15 cm long. Flowers are long-lived but by December/January they are losing their brilliance and forming green fruits. These mature to brown and each pod contains one or two winged seeds.

Historically, silky oak was a popular timber with a fine golden grain for furniture and musical instruments, but supply is now very restricted. It is grown successfully in Africa, in timber plantations and for shade. Some people get contact dermatitis from handling the flowers and fruit. Timber workers can be highly allergic to the dust.

It's popular as a street tree in many places, including south-west China and right here in Canberra, in Baudin Street, Forrest. Those planted in the median strip in



Grey bark showing warmer colour on the less-exposed parts.

*Photos by
Linda Muldoon*

Friends out in force!

ST JOHN'S CHURCH FAIR

Thanks to the organisers of St John's Church Fair (John and Kay Beagle who are also members of the Friends) for inviting us to participate in this event which took place on 22 October 2011. They also provided us with a prime position for our display in the Church Hall. We just couldn't be missed in the centre of the hall near the entry. A total of ten Friends volunteered to work shifts to man the display throughout the day and Jocelyn provided a bonsai to give a 'living forest' touch.

We raised more than \$800 from book and calendar sales which will aid the development of the Arboretum. Also many people took pamphlets to become new members.



Anna Howe (right) was one of our volunteers. Here she is explaining aspects of the project to a member of the public.

END OF YEAR FUNCTION

27 November was a very busy day for the Friends. Work began at 8.30am for the tree measuring sub-group and others started weeding the Friends' Rocky Knoll at 10.00am. By noon, representatives from both groups had worked up an appetite for the Christmas barbecue—and

what wonderful facilities we have in the Himalayan cedar forest? We took the opportunity to take a new photo of the 'blue people' to update the photo on the Friends' website. Thankfully the weather was kinder than last year (*see photo at foot of page*). Are you there?

Many thanks to those responsible for the barbecue preparations and for all the work you did on the day. This was a very successful and enjoyable event. (Ed.)



These top two photos by Roger Hnatiuk, others by Linda Muldoon



FOREST TALK



FROGWATCH

In October Roger Hnatiuk was excited to report recording the first frog at the western end of the ephemeral wetland on STEP's Lot 100—a *Limnodynastes tasmaniensis* (Spotted Grass Frog). Frogwatch observations began at the site in March 2010 and have continued at approximately quarterly intervals.

The recordings for the December quarter have been excellent with an increase in frog numbers. This time three species were logged at the STEP site and the cork oaks dam logged two species new to that site.

Frogwatch also welcomed Justine L'Espagniol as a new volunteer.

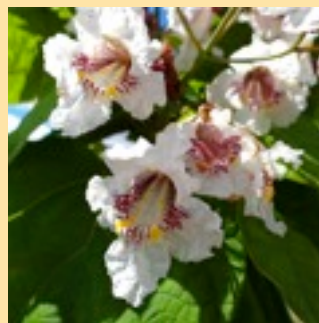
THEY NEARLY MADE IT TO THE ARBORETUM!

Queen Elizabeth II and the Duke of Edinburgh, leaving 'Yarralumla' and crossing Lake Burley Griffin to visit Floriade on 20 October 2011.

Department of Prime Minister and Cabinet photo

YOUNG TREES FLOURISH THROUGH CHANGE OF SEASON

Top row: new leaves on the Illawarra flame tree on 13 Nov., flowering ash flowering for the first time on 27 Oct., some southern magnolias flowering on 8 Jan., not all the Mediterranean redbuds in are red on 16 Oct.. *Bottom row:* a few silk trees were flowering for the first time on 8 Jan., some of the southern catalpas were flowering on 11 Dec., first pods on Buchan blue wattle (from 2010 flowering) on 13 Nov., new pink tips on linden tree on 20 Dec.



Photos by Linda Muldoon

Membership application form

Please complete the form below **OR** go to **www.arboretumcanberra.org.au** where you can join online and make a secure payment.

Yes, I/we wish to join the Friends of the National Arboretum Canberra Inc.

1. Title First name

Last name

2. Title First name

Last name

Address

..... Postcode

Telephone (h) (w).....

Email address

Do you agree to receiving notices of meetings via email?

YES/NO Date of application

Please tick your relevant membership category:

☐ **Single (\$25.00)** ☐ **Association or club (\$50.00)**

☐ **Concession (\$10.00)** ☐ **Corporate Friend (\$2000.00)**

☐ **Household (\$30.00)**

Memberships are due for renewal in December each year

Please tick your method of payment

☐ **Cash** ☐ **Direct deposit**

☐ **Cheque** (cheques must be made payable to the
Friends of the National Arboretum Canberra Inc.)

Details for direct deposit are:

WESTPAC, Petrie Plaza, Canberra, ACT

Account—Friends of the National Arboretum Canberra Inc.

BSB No. 032719 Account No. 375379

If making a direct deposit, please make sure that you record your name so that your membership can be verified.

Send applications to : **The Secretary**

Friends of the National Arboretum Canberra Inc.

PO Box 48

Campbell ACT 2612

PLEASE remember to keep us up-to-date if you change your street address or email address.

Contact

You can contact the Friends at **friends@arboretumcanberra.org.au** or via our website on **www.arboretumcanberra.org.au** or by phone on **0406 376 711** during business hours

Friends of the National Arboretum Canberra Inc.

OFFICE BEARERS

Jocelyn Plovits, *Chair*
Trish Keller OAM, *Deputy Chair*
Colette Mackay, *Secretary*
Alan Franklin, *Treasurer*
Spero Cassidy, *Events Co-ordinator*

COUNCIL MEMBERS

Cathy Robertson, *STEP Representative*
Linda Muldoon, *Publications Editor*

The Council (all of the above) meet on the second Tuesday of each month. We invite any member interested in joining the Council to contact us. We would definitely welcome more faces as we need five members for a quorum, which is sometimes difficult to achieve.

LIFE MEMBERS

Sherry McArdle-English
Roger Hnatiuk

HONOURARY MEMBER

Jon Stanhope

Newsletter

The newsletter is published quarterly. Contact the editor, Linda Muldoon, on **lindaon@grapevine.com.au** if you would like to contribute to a future issue.

The Friends thank the ACT Government and our sponsors for their support.

Information prepared by the Friends of the National Arboretum Canberra Inc. 1/2012

